



JIEOL TRANSPARENT STAR HOUSE SERIES

5M/6M/7M/8M



CHOOSE YOUR DOME STEP BY STEP



01



Dome Size

02



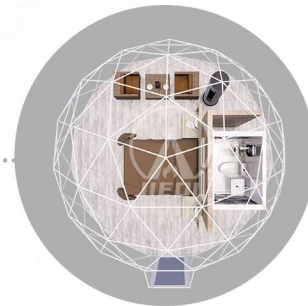
Exterior Design

03



Exterior
Configurations

04



Interior
Configurations



SIZES OF DOMES



A5



5M



20m²

A6



6M



28m²

A7



7M



38m²

A8



8M



50m²

1-2 people sleeping 1-2 people sleeping with bathroom for family,
2 adults + 2 kids luxury suite



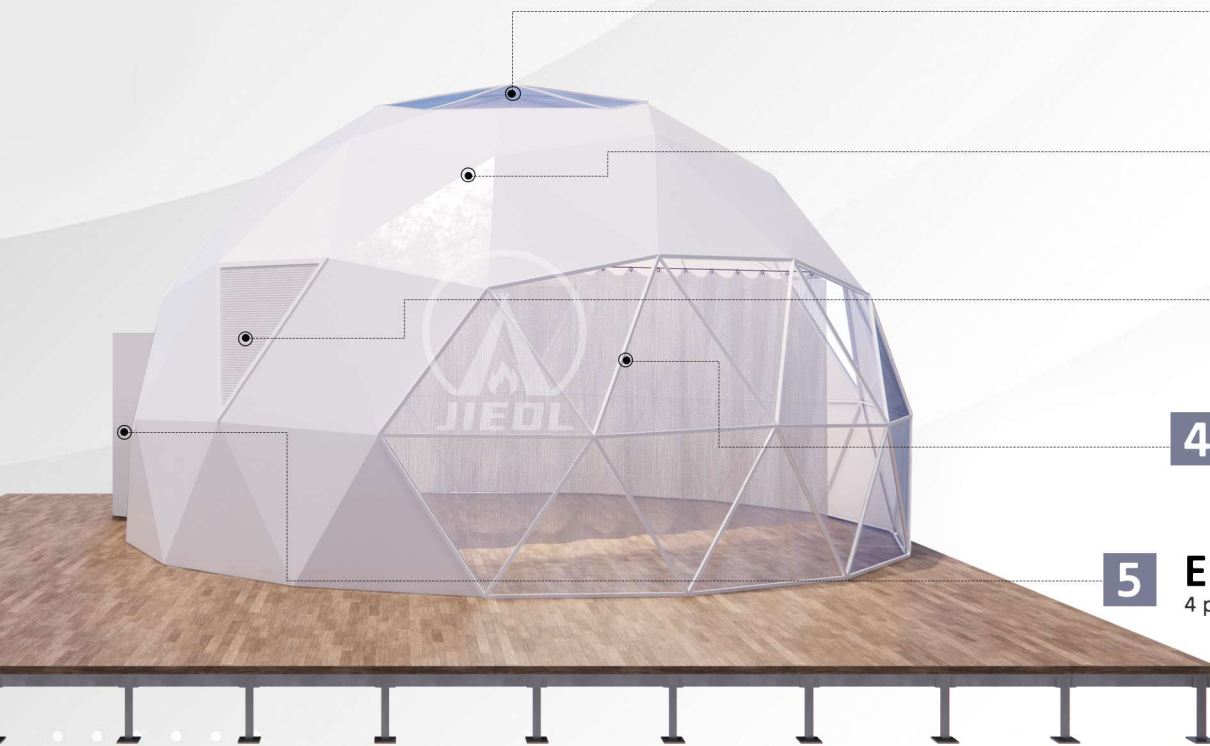
PRODUCT SPECIFICATIONS



MODEL	A5	A6	A7	A8
Main body size	Φ5m	Φ6m	Φ7m	Φ8m
carpet area	19.60m ²	28.26m ²	38.48m ²	50.24m ²
Top Height	3m	3.5m	4.1m	4.7m
Top cloth	850g/m ² Or 950g/m ²			
Internal accounts	nsulation cotton, Oxford cloth, insulation aluminum foil, elastic cloth, double-layer insulation layer, four layer insulation layer, customizable			

<i>Branch pipe diametel</i>	<i>Waterproof inde</i>	<i>Wind protection level</i>	<i>Roof load</i>	<i>Temperature conditions</i>	<i>service life</i>
25x2.0mm 32x2.0mm	WP10000	120km/h	50kg/m ²	-30℃—60℃	10 years

EXTERIOR DESIGN



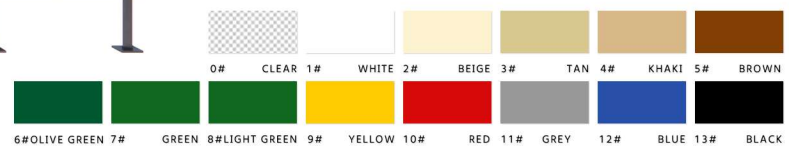
1 Skylight
Transparent PVC skylight

2 Appearance Color
6 colors to choose from

3 Transparent PVC Windows
4 positions to choose from, with optional sizes

4 Transparent Area
4 positions to choose from, with optional sizes

5 Entrance Location
4 positions available for selection



EXTERNAL CONFIGURATION



Solar Exhaust Fan 1

Solar ventilation fan with battery system

1

PVC Shell 2

850g/m² PVC double-sided treatment coating

2

PVC or Glass 3

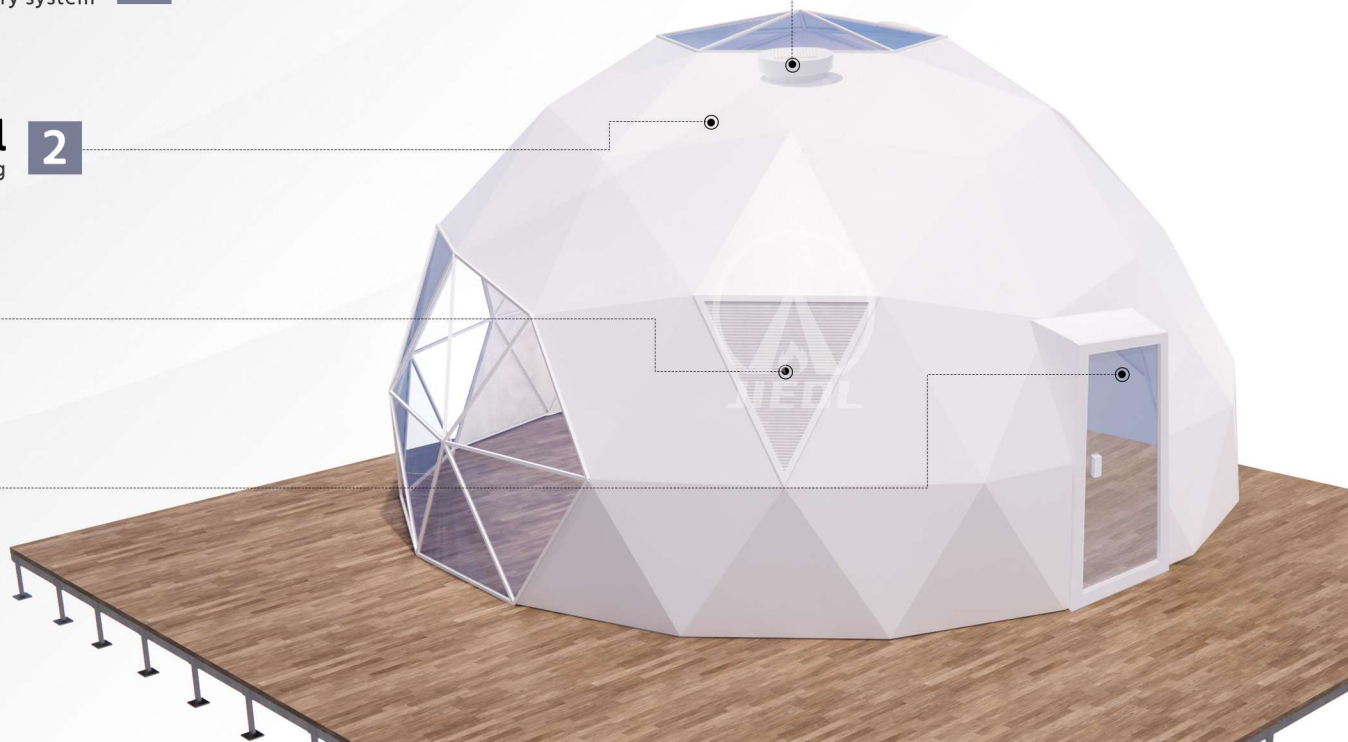
Aluminum glass windows,
waterproof and sealed

3

Glass Doors 4

Broken bridge aluminum
insulated glass door Perfect
match with door frame

4



INTERNAL CONFIGURATION & DESIGN



Furniture

Curtain x1 solid wood bed x1
Mattress x1 Bedframe x2
Wardrobe x1 Side Rack x1
Leisure table x1 Leisure chair x2
Dining chair (optional) fireplace (optional)

Wooden Floor

Wood plastic composite flooring
Luxury multi-layer solid wood flooring (optional)
Floor radiation heating wooden flooring (optional)



Home Appliances

Bedroom pendant light x1 Indoor wall light x1
2P air conditioner x1 electric kettle x1
Hanging hair dryer x1
Sunroof with electric sunshade (optional)

Bathroom Module

Wood veneer aluminum wall x1
Waterproof floor x1 honeycomb x1
Hand wash kit x1 sink x1
Towel rack x1 shower x1 toilet X1



MATERIALS & FUNCTIONS



Structure

High quality seamless steel pipe
Dimensions: 25x2.0mm, 32x2.0mm
Surface: Surface baking paint process treatment

Fabric

High quality fabric
Shell: 850g/m² PVC knife double-sided treatment coating
Inner fabric: 140g/m² double-sided Oxford quilted fabric



Door

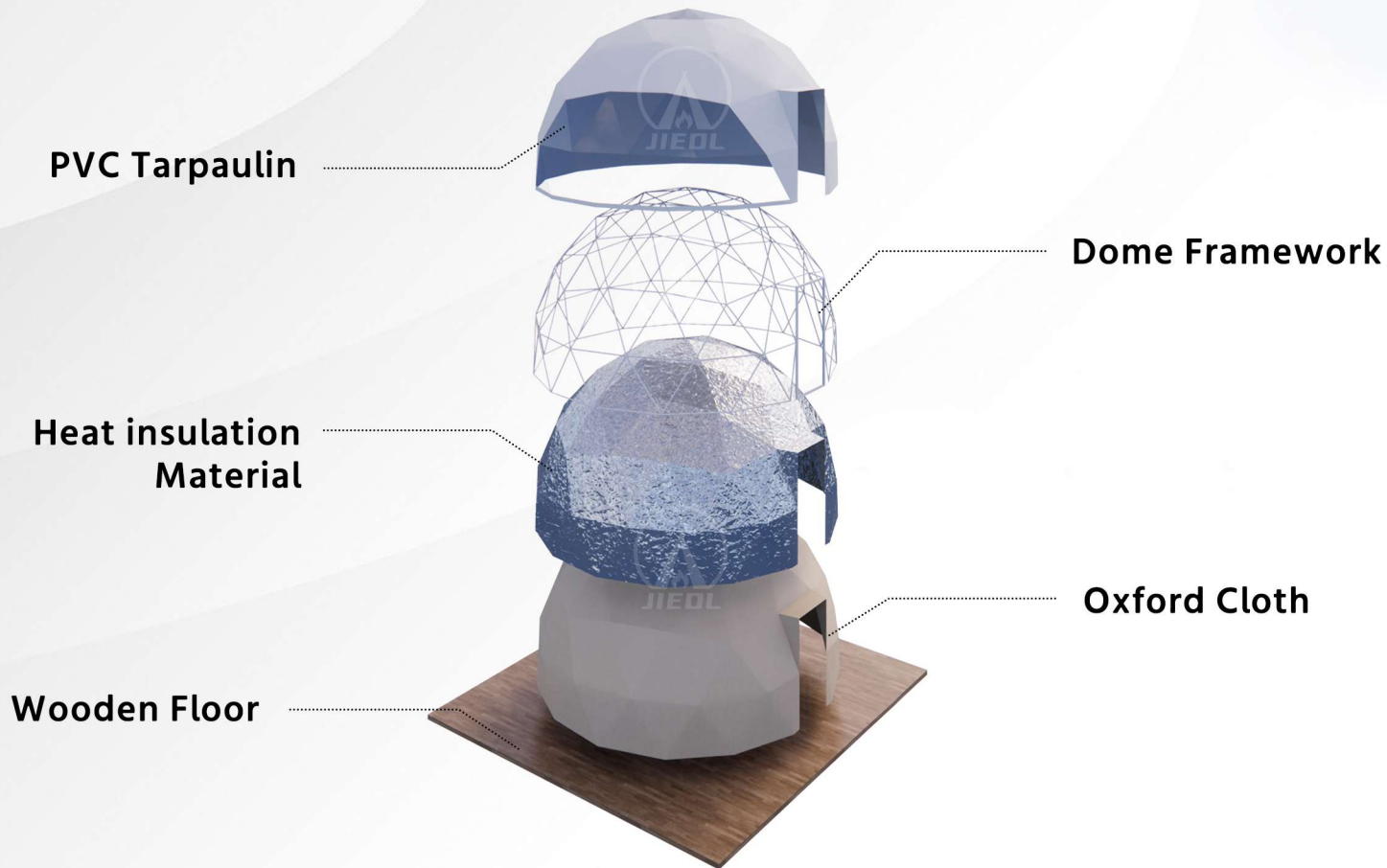
Material: 80 bridge cut aluminum
Locks: High quality locks
Glass: Tempered hollow glass 5+9A+5

Wooden Floor

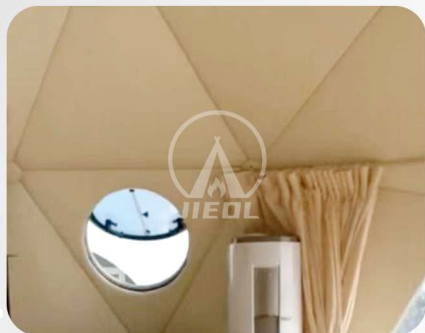
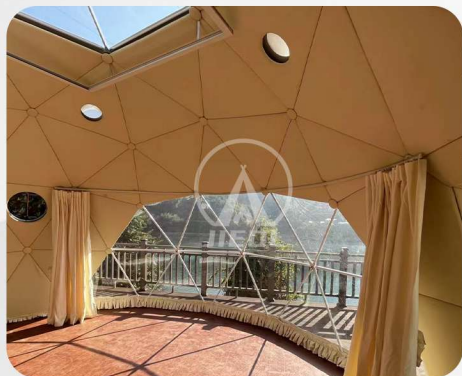
Indoor composite wood flooring
Multiple colors to choose from
Models: 01, 02, 08, 09



HEAT-INSULATION SYSTEM



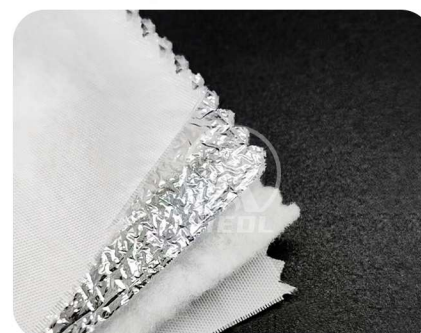
INSULATION



PU Board



Oxford Cloth+aluminum foil



Insulation

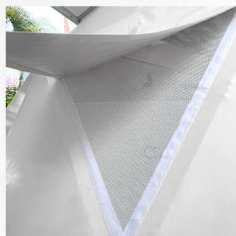
ACCESSORIES



PVC Clear Window
(cannot open, for nature light)



Triangle Glass window



Triangle Screen Window
(Ventilation, translucency)



Round Glass Window



Electric Sunroof



Glass Door



Solar Exhaust Fan



Curtain



Chimney hole



Fireplace



OPTIONAL FURNITURE



Integrated
bathroom



180cm Bed/Mattress 50cm Nightstand
150cm Bed/Mattress
135cm Bed/Mattress



Double chair
coffee table



Tea Table
Sofa Chair



80cm Wardrobe
100cm Wardrobe



50" TV
120cm TV Table



250cm Kitchenette
300cm Kitchenette



140cm dining table

CASE PRESENTATION



ABOUT US



The headquarters of Jieol Tent Ltd. is advantaged located in the Guang-zhou international economy development center-Zhu Jiang New Town.Guangzhou Jieol Tent Co.,Ltd is invested by LINGHANG (HK)International Group,fea-tured in design.R&D,production,as well as export.Its product lines include PVCStar house tent,PC clear star dome tent,membrane tensile structure,safaricamping tent,alu-minum tent,triangle tent,shell shape tent,camping tables andchairs set.All of the products are sold well all over the world,more than 100countries.

Jieol Tent has a modern production base covering nearly 20,000 squaremeters and advanced hardware processing equipment,In Jieol Tent,the select.ed high grade raw materials (International Aviation Aluminum and ImportedPVC material),the first class design team,professional manufacture engineeralong with high standard and strict monitoring system are the proof of our commitment to the product quality.

Jieol Tent offer one to-one personalized customer service,they can cus-tom.ized their own product according to varies of requirements based on the lo-calenvironment,from a user-experience perspective,combined with most pro-fes.sional and serious design concept.

Jieol Tent insist on honesty and"win-win"business philosophy,we havesuc-cessfully won the favor of the large consumer successfully all over the worldby high quality product and convenient service.

CONTACT US



Tel

+86-02038039613



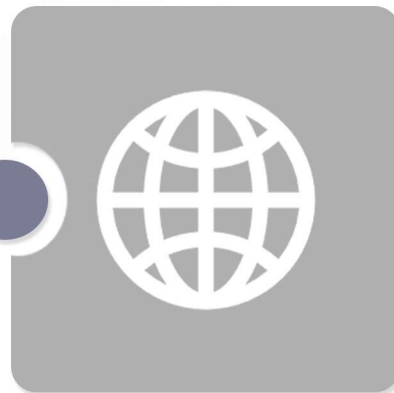
WeChat & Cell Phone

+86-15013125806



Email

Info@jieol.com



Website

www.jieol.com

